

Programma esame di ammissione Triennio di I livello AFAM

Teoria, Ritmica e Percezione musicale (Parte B – Prove teorico-culturali)

Il programma d'esame per l'ammissione al Triennio di I livello AFAM in merito alla prova culturale volta a verificare la preparazione generale del candidato relativamente alla lettura musicale e all'educazione dell'orecchio – vedi *Parte B* dell'esame di ammissione – consiste nelle seguenti prove, di difficoltà pari a quella prevista in uscita dai corsi Propedeutici per quanto riguarda la materia Lettura, Teoria, Ear-Training;

- 1) Lettura a prima vista in chiave di violino e realizzazione di abbellimenti
- 2) Lettura a prima vista nelle chiavi alternate, senza abbellimenti
- 3) Lettura intonata a prima vista in chiave di violino
- 4) Prova scritta uditivo-teorica

Si allega fac-simile delle prove a titolo di esempio.

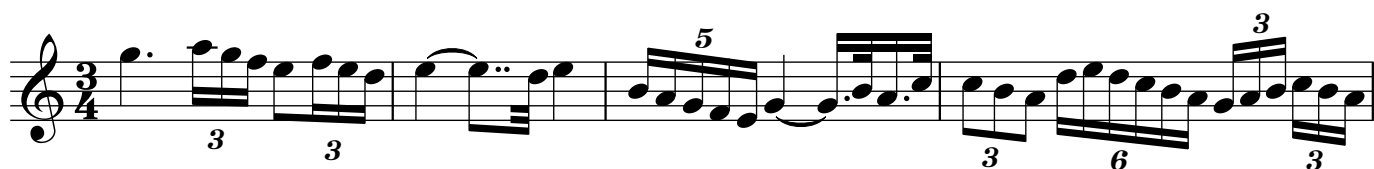
N.B.:

- I candidati in possesso della Certificazione di Lettura, Teoria, Ed. auditiva o della Licenza Vecchio Ordinamento dovranno sostenere unicamente la Prova uditivo-teorica (n. 4).

- I candidati in possesso della Certificazione di Lettura, Teoria, Ed. auditiva, unitamente alla Certificazione di Lettura, Teoria, Ear Training o alla Certificazione di Ear Training, Armonia e Analisi, sono esonerati dall'esame d'ammissione.

Esame di ammissione
Triennio Superiore di I livello (AFAM)

Lettura a prima vista in chiave di Violino



Abbellimenti



Lettura a prima vista in Setticlavio

The image displays a musical score for a piece titled "Lettura a prima vista in Setticlavio". The score is written on four staves, each with a treble clef and a 3/4 time signature. The music is composed of eighth and sixteenth notes, with various rhythmic patterns and rests. The score includes several triplet markings (indicated by the number '3' above or below the notes) and a quintuplet marking (indicated by the number '5' below the notes). The piece concludes with a double bar line. A large, semi-transparent watermark reading "facsimile" is overlaid diagonally across the entire page.


Esame di ammissione
Triennio Superiore di I livello (AFAM)


Lettura a prima vista cantata

The image displays a musical score for a sight-singing exam. It consists of three staves of music, all written in a single treble clef. The time signature is 3/4, and the key signature is one flat (B-flat). The first staff begins with a treble clef, a key signature of one flat, and a 3/4 time signature. The melody starts on a quarter note G4, followed by quarter notes A4, Bb4, and C5. The second staff continues the melody with a quarter rest, followed by quarter notes D5, E5, F5, G5, A5, Bb5, and C6. The third staff concludes the piece with a quarter note G5, a half note F5, a quarter note E5, a quarter note D5, a quarter note C5, a quarter note Bb4, a quarter note A4, a quarter note G4, and a final quarter note F4. A large, light gray watermark reading 'facsimile' is oriented diagonally across the page, partially overlapping the musical staves.

Sezione teorica

TT1 - Scrivi le unità di misura dei seguenti tempi:


Sudd.	Tempo	Misura
		

Sudd.	Tempo	Misura
		

TT2 - Definisci i seguenti intervalli:

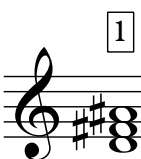
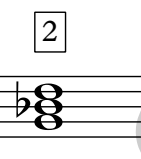
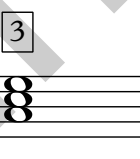
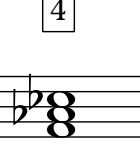








TT3 - Definisci i seguenti Accordi:

1	2	3	4
			

TT4 - Scrivi le relative minori/maggiori delle seguenti tonalità:

FA# magg.

.....:_____

DO min.

.....:_____

FA min.

.....:_____

TT5 - Scrivi la sensibile delle seguenti tonalità:

DO# magg.

.....:_____

FA# min.

.....:_____

SIb min.

.....:_____

Sezione armonia

Realizza le seguenti triadi allo stato fondamentale o rivoltato (indica l'armatura di chiave)

A musical staff with a grand staff (treble and bass clefs) and a common time signature (C). The staff is divided into three measures by vertical bar lines, each intended for a triad.

I di Mi Maggiore

IV di Sol minore

V di MIb maggiore

Segnala i procedimenti scorretti. Realizza accanto la soluzione corretta (indica i gradi di ogni accordo con numeri romani)

A musical staff with a grand staff (treble and bass clefs) and a common time signature (C). The staff is divided into six measures by vertical bar lines. The first two measures are in C major, the next two in G major, and the last two in B-flat major. Each measure contains a triad. The first two measures have a dashed vertical line between them, and the last two have a dashed vertical line between them. The notes are: Measure 1: C4, E4, G4; Measure 2: C4, E4, G4; Measure 3: G4, B4, D5; Measure 4: G4, B4, D5; Measure 5: Bb4, D5, F5; Measure 6: Bb4, D5, F5.

V

VI

II

V

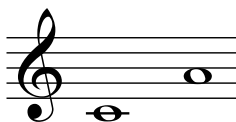
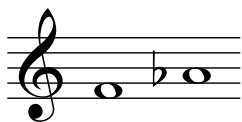
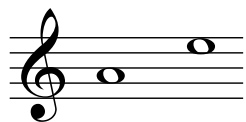
I

II

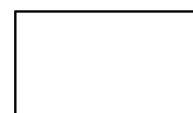
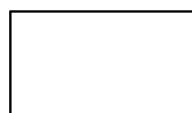
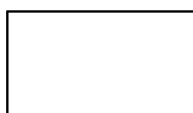
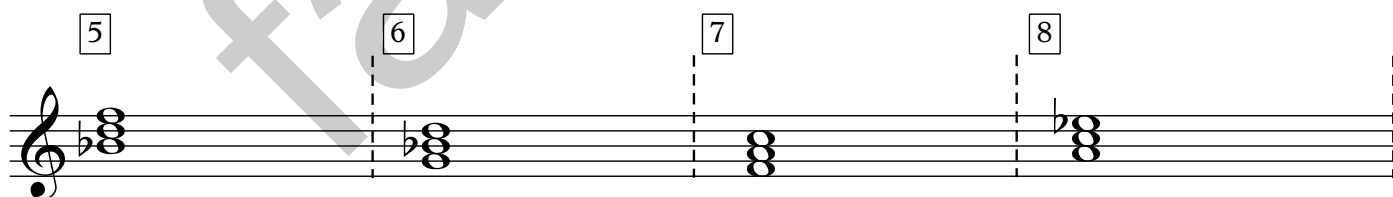
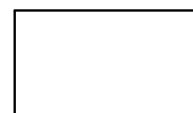
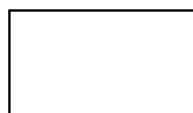
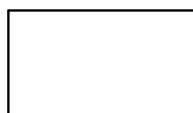
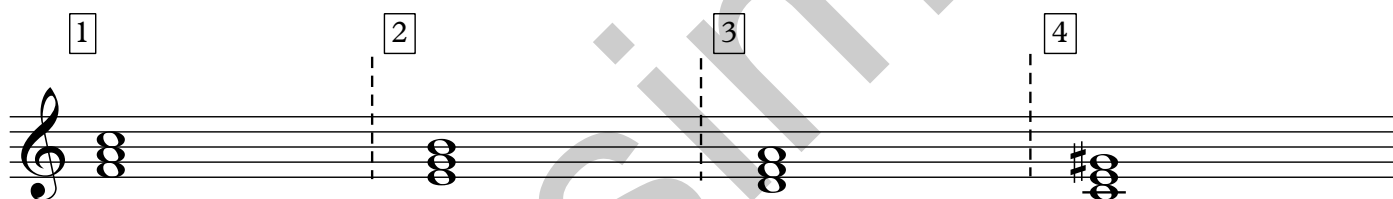
Realizza il seguente basso

A musical staff with a grand staff (treble and bass clefs) and a common time signature (C). The staff is divided into four measures by vertical bar lines. The bass line is written in the bass clef. The notes are: Measure 1: (8) (octave sign), C4, E4, G4; Measure 2: 6, G4, B4, D5; Measure 3: 6, G4, B4, D5; Measure 4: 8, 6, 4, Bb4, D5, F5.

TU1 - Ascolta, scrivi e definisci i seguenti intervalli:



TU2 - Ascolta, scrivi e definisci i seguenti accordi maggiori, minori, diminuiti o eccedenti:



Dettati melodici

Es. 1

Musical notation for Example 1, featuring a single staff in 3/4 time with a key signature of one flat (Bb). The melody consists of eighth and quarter notes, ending with a triplet of eighth notes.

Es. 2

Musical notation for Example 2, featuring a single staff in 3/4 time with a key signature of two sharps (F# and C#). The melody consists of eighth and quarter notes, ending with a quarter note.

Es. 3

Musical notation for Example 3, featuring a single staff in 2/4 time with a key signature of one flat (Bb). The melody consists of eighth and quarter notes, including a triplet of eighth notes.

Es. 4

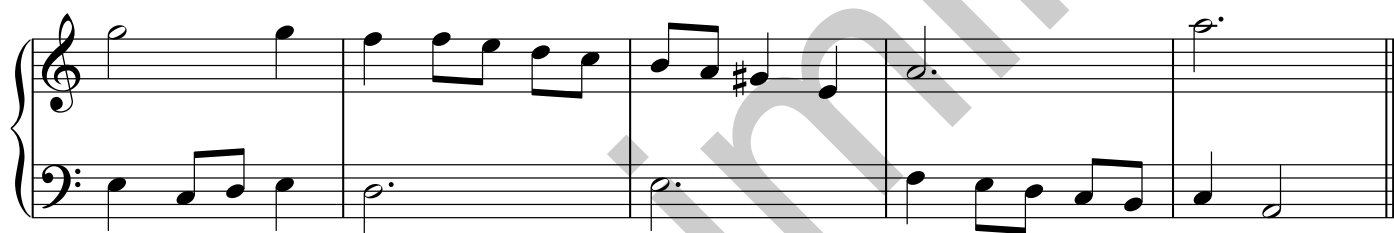
Musical notation for Example 4, featuring a single staff in 3/4 time with a key signature of two sharps (F# and C#). The melody consists of eighth and quarter notes, ending with a triplet of eighth notes.

Dettati Polifonici

Es. 1



Es. 2



Es. 3



N.B. al termine delle prove uditive sin qui svolte, è prevista la trascrizione di un frammento musicale, tratto da un brano di repertorio. La prova potrebbe riguardare sia l'aspetto ritmico che quello melodico.